

Researched and compiled by the
Sexual Abuse Survivors Trust



**This brochure is a list of known
agencies with “Safe Houses”
and short or medium term
accommodation**

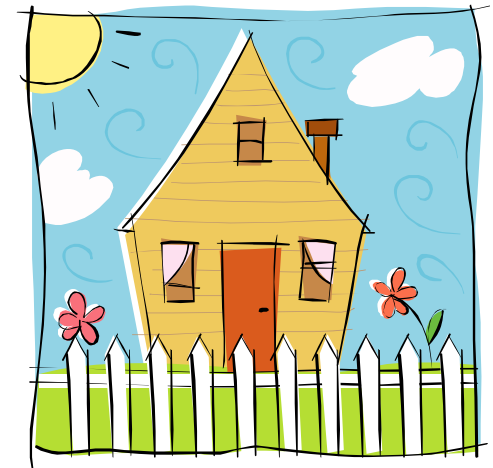
Providers of SAFECARE
P O Box 944
391 Durham Street North
Christchurch 8140
Phone 03 377 5401
Fax 03 377 5402
Email sast@sast.org.nz
www.sast.org.nz

Details correct as of 1-11-09

CRISIS ACCOMMODATION

Do you need a safe place

You are not alone.
We are here to help



This brochure is a list of known
agencies with “Safe Houses”
and short or medium term
accommodation

Single Women with Children

Open 7 days, 24 Hours

Battered Women's Refuge

Phone 03 332 4122

For women and children suffering domestic violence. Priority given to families. (Boys in families up to 12 years. Over 12 years also considered). Single women also welcome. Four shared rooms. Charges: according to circumstances, covers accommodation costs. Food not supplied. Residents expected to be independent.



Christchurch Women's Refuge

Phone 03 364 7306

The safe house has 5 rooms, 13 beds. Boys up to 12 years with family. Girls all ages. Adults \$12 a night, Children \$1 a night. Charge covers accommodation, power, phone. Also able to support women in obtaining court orders, making police statements etc. Community services available. Wheelchair access.



West Christchurch Women's Refuge

Phone 03 379 0575

Safe accommodation for women and children experiencing domestic violence. 1 family per unit. (Boys with mother up to 12 years). Offers Community Services.



Home and Family

Phone 379 5645

Emergency support accommodation for women and children. Also two flats for small family groups. Individual assessment for issues involved and costs.



Y.W.C.A.

Phone 03 365 8720

Women only facility

Women 16yrs up \$121 per week, \$22 per night

10-15 yr \$77per week, \$11 per night

6-9 yr \$50 per week, \$9 per night

Babies to 5yr \$39 per week, \$7 per night

Won't take male children over the age of 12.

No drugs and alcohol allowed.

Monday to Friday 10am-6p-m



Women and Men

Salvation Army

03 377 0799

Accommodation for women and men. Must have Community services card. Information and support and assistance with finding accommodation



Males

Christchurch City Mission

275 Hereford Street. Phone 365 0635

Free night shelter for men on a first come first served basis. Dinner at 5.30, supper at 8.00 and breakfast before leaving in the morning. Open 7 days 5.00pm to 8.30 am. Not open during the day. Intake interview required.

